



Fees per Credit Hour/  
Year for Accredited Degree  
Programs



Scholarship  
and Financial  
Aid



More about  
the College



/ajmanuniversity | www.ajman.ac.ae

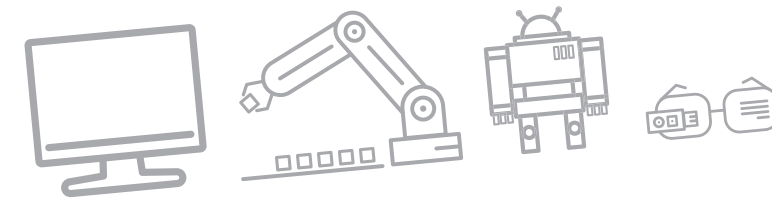
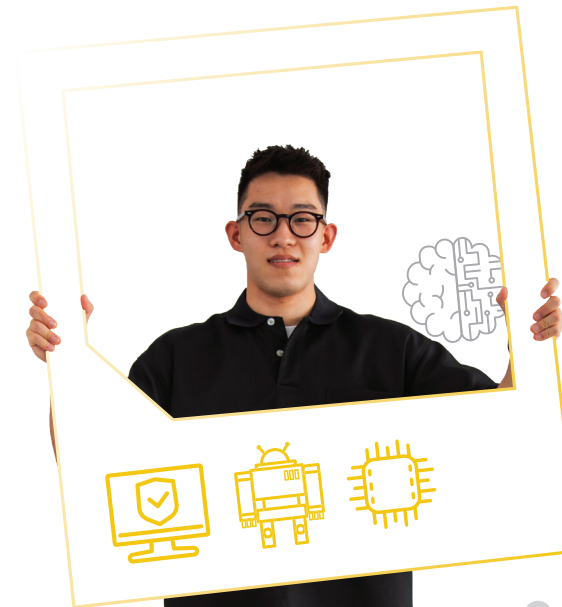
**TOLL FREE**  
**800 2878**

For inquiries: inquiry@ajman.ac.ae



جامعة عجمان  
AJMAN UNIVERSITY

## COLLEGE OF ENGINEERING & INFORMATION TECHNOLOGY



ENGINEERING AND  
INFORMATION TECHNOLOGY

The first step towards  
achieving your dreams is  
choosing the right education.

Ajman University  
**“MAKING  
DREAMS  
HAPPEN”**

Accredited by:



Engineering  
Accreditation  
Commission



وزارة التربية والتعليم  
MINISTRY OF EDUCATION

| Offered Programs   | Admission Requirements<br>U.A.E Secondary School<br>(Certificate or its equivalent)                   | Duration<br>(Credit Hours) | Career Opportunities  |
|--|---|----------------------------|---|
| B.Sc. in Electrical Engineering <ul style="list-style-type: none"> <li>Instrumentation and Control</li> <li>Electronics and Communication</li> <li>Power and Renewable Energy</li> </ul> | Minimum overall of 75%<br><br>(Elite Stream) OR 80% (Advanced Stream)                                 | 4 Years (142 Cr. Hrs.)     | Electronics and Computers, Automation and Manufacturing, Security Control Systems, Product Design and Development, Telecommunication, Power Generation and Distribution and Renewable Energy System Design. |
| B.Sc. in Biomedical Engineering  |   | 4 Years (141 Cr. Hrs.)     | Maintenance of Healthcare Facilities, Manufacturer Representatives Sales of Biomedical Equipment, Design, Development and Consultancy of Biomedical Equipment.  |
| B.Sc. in Civil Engineering   |   | 4 Years (141 Cr. Hrs.)     | Structural Engineering, Transportation, Traffic and Highway Engineering, Geotechnical Engineering, Environmental and Water Engineering.   |
| B.Sc. in Computer Engineering  |   | 4 Years (140 Cr. Hrs.)     | Computer Hardware and Software Development, Information Systems and Computer Networks, and Computer Services of Public Administration.  |
| B.Sc. in Mechanical Engineering  |   | 4 Years (141 Cr. Hrs.)     | Power and Energy, Automation and Manufacturing, Aerospace and Transportation, Services and Logistics, Building and Construction, and Healthcare and Medical Equipment.                                      |
| B.Sc. in Information Technology <ul style="list-style-type: none"> <li>Networking and Security</li> </ul>  | Minimum overall of 60% (Elite Stream) OR 70% (Advanced Stream) OR 80% (General Stream)                | 4 Years (123 Cr. Hrs.)     | IT Resource Management, Network Administration, Network Security, Design and Implementation of Network Solutions, IT Project Management, and IT Consultancy.  |
| B.Sc. in Data Analytics  |   | 4 Years (123 Cr. Hrs.)     | Data Analysis, Big Data Engineering, Business Intelligence Analysis, and Information Management.  |
| B.Sc. in Information Systems <ul style="list-style-type: none"> <li>Project Management</li> <li>E-Business Management</li> </ul>   | Minimum overall of 60% (Elite /Advanced Stream) OR 70% (General Stream)                               | 4 Years (123 Cr. Hrs.)     | Commerce, Finance, Computing and Telecommunication, Health Facilities, Government Services, Education and Research Organizations.   |
| M.Sc. in Artificial Intelligence   | Bachelor’s Degree in Computer Science or a directly related discipline with a minimum CGPA of 3.0/4.0 | 2 Years (30 Cr. Hrs.)      | Development and implementation of AI technologies in public, governmental, private, and military sectors. Scientific Research in various AI-related fields, industries and organizations.                   |

## The Emirates Standardized Test (EmSAT) Requirements:

- Admission to all offered Bachelor programs in the College of Engineering requires:
    - EmSAT in English Language with a score of 1100 or an equivalent English Proficiency Test approved by MOE.
    - EmSAT in Arabic Language with a score of 600. (Except Data Analytics, Information Technology, and Information Systems programs)
    - EmSAT in Mathematics with a score of 900 or equivalent. (Except Data Analytics, Information Technology, and Information Systems programs)
    - EmSAT in Physics with a score of 800 or equivalent. (Except Data Analytics, Information Technology, and Information Systems programs)
- Admission to M.Sc. in Artificial Intelligence requires an EmSAT in English Language with a score of 1400 or an equivalent English Proficiency Test approved by MOE.